

Wall Graphic Instructions

These instructions explain how to use the included supplies to install your wall graphic. It's also recommend you ask a friend for help.

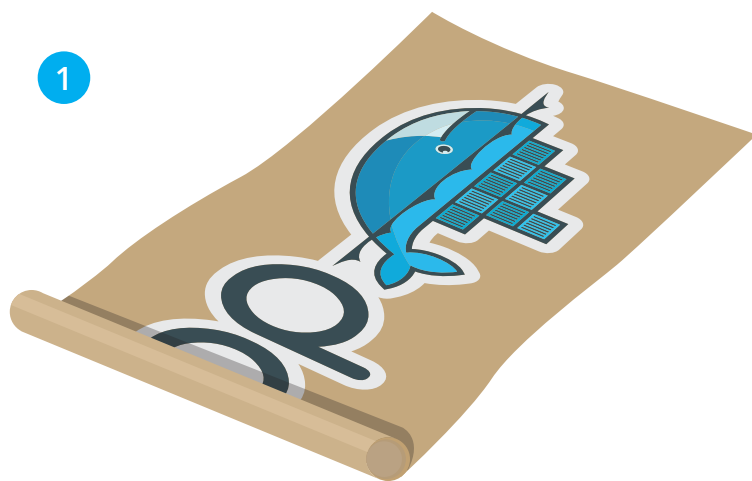
Included supplies:



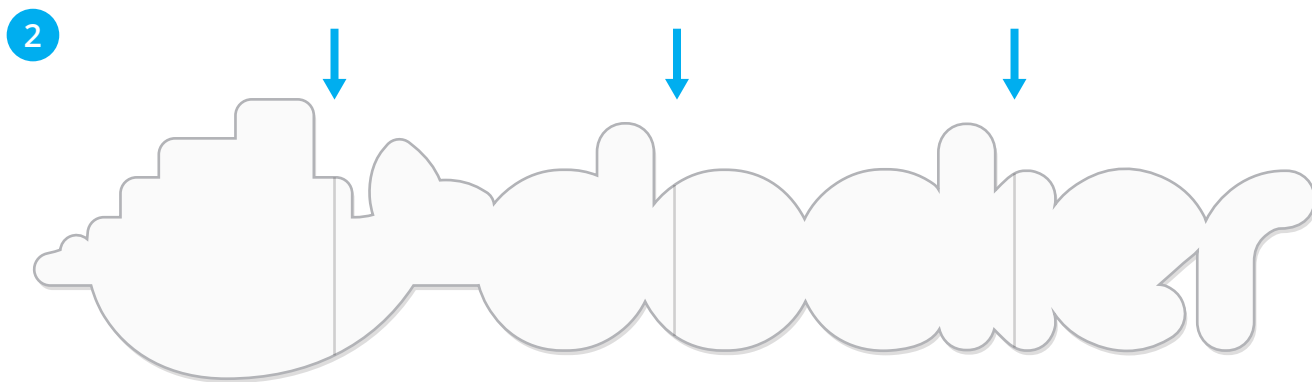
Squeegee



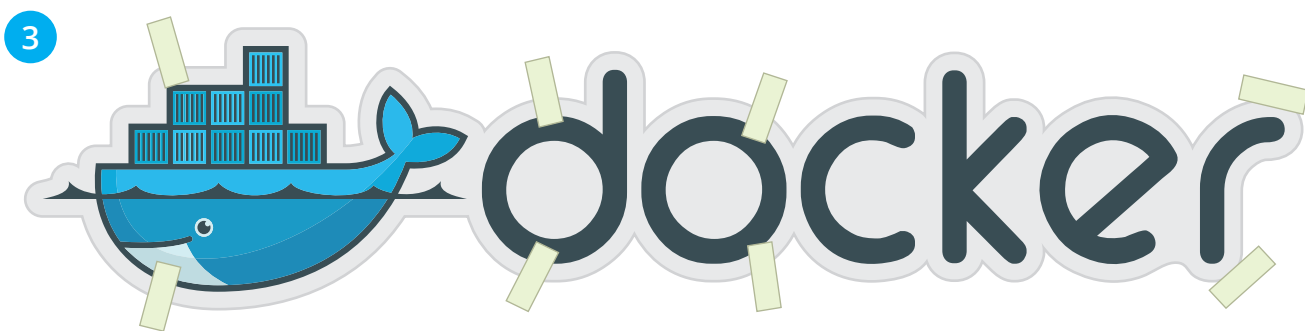
Tape strips (x 10)



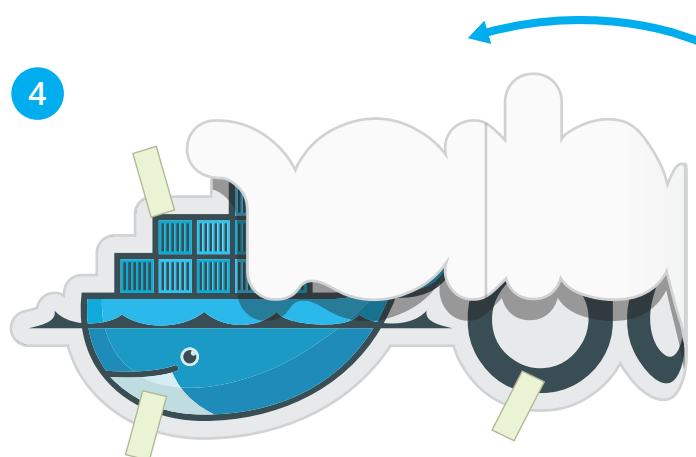
Unroll your wall graphic and discard the brown kraft paper.



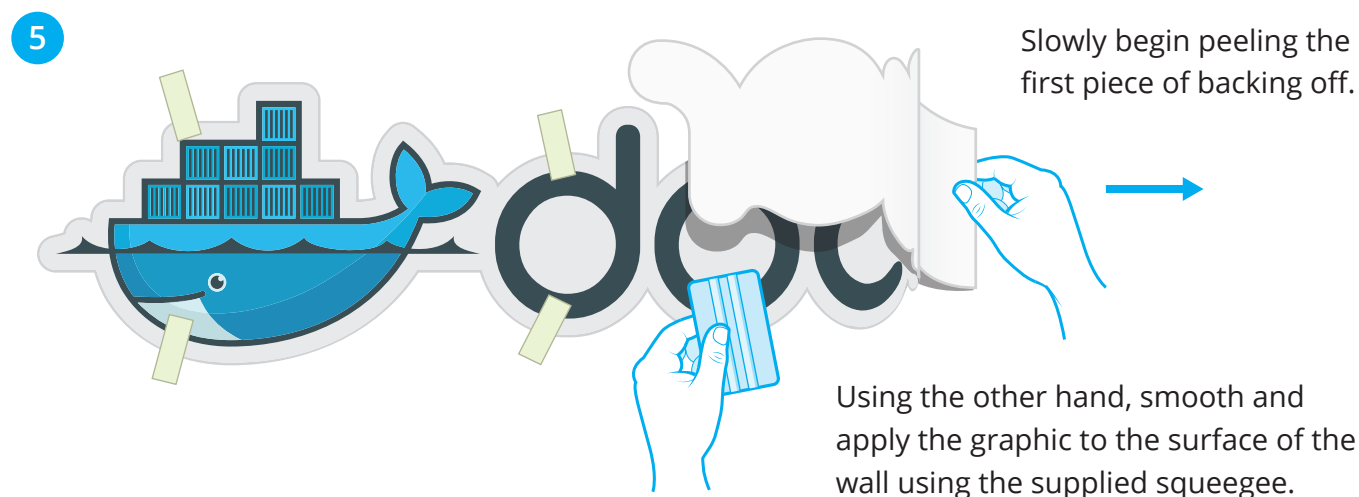
Flip the wall graphic over and place face down on a clean surface. Notice the 3 vertical back slits going through the backing of your wall graphic.



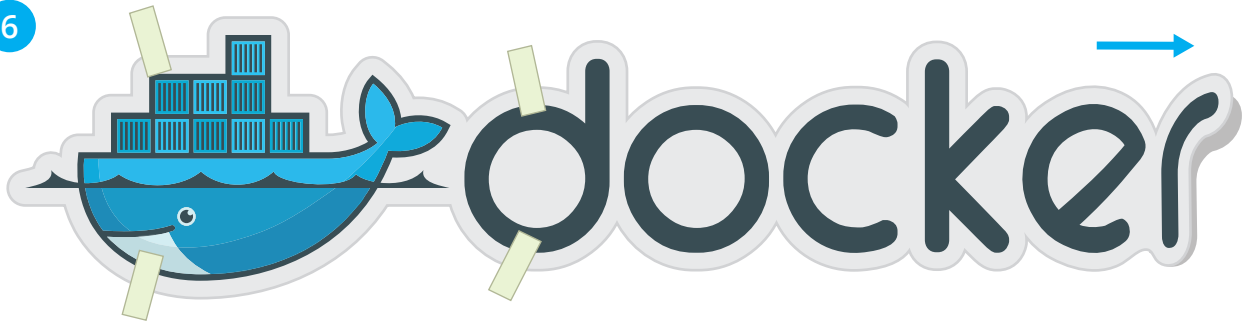
Place the wall graphic against a clean wall and line it up as desired. Apply strips of tape to secure it to the wall. Leave a few inches in the middle area of the wall graphic free of tape to avoid taping over the middle back slit.



Remove all of the tape from the right side of the wall graphic and carefully hold the graphic over to the left exposing the backing.



6



Continue peeling the backing off from the right side while applying the wall graphic. Our vinyl is repositionable, so if you notice any wrinkles or bubbles, carefully peel that section off and re-apply.

7



Remove the rest of the tape from the left side of the graphic. Hold the graphic over to the right and repeat the steps for peeling and applying the rest of the wall graphic.

8



All done! Stand back and celebrate your awesomeness!